

# 充气型护舷

## Pneumatic Fenders

充气护舷利用内部的压缩空气作为缓冲介质，吸收船舶冲击能量，弹性好，吸能大、反力低、面压小；

倾斜压缩性能不降低，漂浮性能好；安装、携带方便；用于各种船舶海上过驳、外海大型码头及潮差大的各种码头。

Pneumatic Fenders take the inside compressed air as cushion media to absorb impact energy;

Smaller fenders can be supplied as Hook type. Larger fenders are commonly fitted with a chain-tyre net for added protection.

Very low reaction and hull pressure.

Easy for installation and handing;

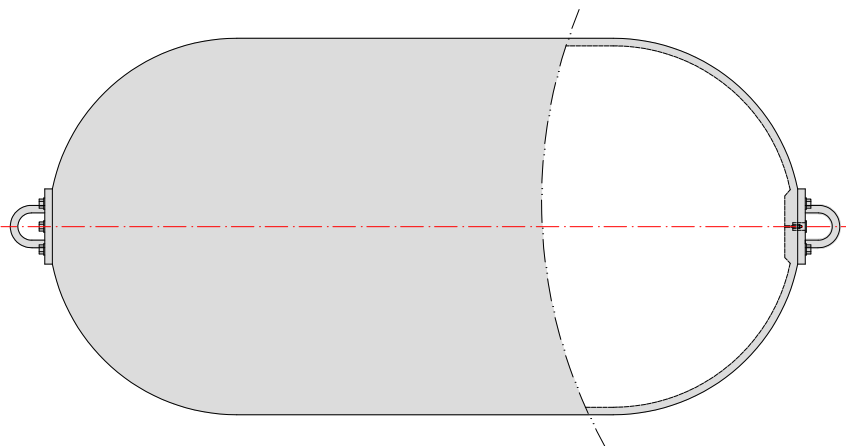


# 充气型护舷

Pneumatic Fenders



## 规格型号 Specification



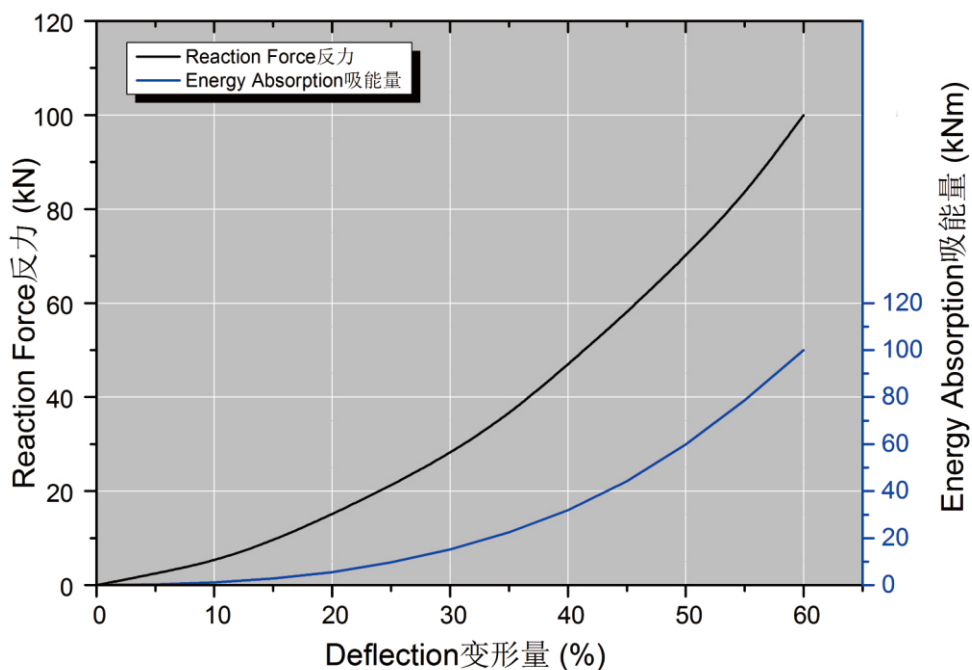
规格 Specification Φ×L	压缩60% Compression		安全阀 设置 Safety Valve setting	试验 压力 Test pressure	护舷参考重量 Fender Reference Weight				吊索型(B型) 护舷参 考重量 Weight of sling type
	反力 Reaction Force	吸能量 Energy Absorption			本体参考 重量 Fender buffer weight	网重 Net weight			
						链条 chain	钢丝 Wire	合成纤维 Synthetic fiber	
mm	kN	kNm	Kpa	Kg	Kg	Kg	Kg	Kg	Kg
300×500	14	1	—	—	8	—	—	—	—
400×800	30	3	—	—	20	—	—	—	—
500×1000	54	5	—	145	25	—	30	20	32
600×1000	65	7	—	145	28	—	30	22	36
700×1500	115	14	—	145	64	150	40	37	55
1000×1500	156	28	—	145	125	190	80	51	105
1000×2000	217	38	—	145	175	230	140	68	120
1200×2000	253	54	—	145	208	300	190	—	140
1200×2400	303	64	—	145	248	320	198	—	—
1350×2500	410	104	—	145	270	330	200	—	210
1500×3000	486	128	—	145	225	490	350	—	265
1700×3000	542	163	—	145	365	580	440	—	290
2000×3500	743	263	—	145	585	980	640	—	450
2200×4500	1078	417	—	145	1080	1090	820	—	—
2500×4000	1049	464	175.0	195	1560	1260	910	—	1080
3300×6500	2981	1795	175.0	240	2585	2680	1910	—	—
4500×9000	5688	4688	175.0	240	4575	4810	3520	—	—

注 (1) 性能公差 Performance tolerance: ±10%

Note: (2) 其它规格尺寸可根据客户要求生产。

Other specifications are available upon request.

## 性能曲线 Performance Curve



## 安装尺寸 Installation dimensions

充气护舷在受到挤压及碰撞时，会发生变形，护舷的安装部位应留有足够的支撑面。

Pneumatic fenders must be installed onto a solid structure or reaction panel to ensure that they are properly supported during impacts.

Size	a	b	c	d	e	w
1000×1500	975	950	1350	200	375	2000
1200×2000	1200	1140	1620	220	430	2600
1500×2500	1525	1420	2050	250	525	3250
2000×3500	2050	1900	2700	300	650	4500
2500×4000	2490	2380	3380	450	890	5200
3300×6600	3380	3140	4460	500	1080	8500

[Unit: mm]

